

Palette with Crypton 2155C

Nettle

Specifications

Contents

100% polyester

Weight

12 ± 1 oz./lin. yd.

Width

54" min. useable

Repeat

none

Treatment

Backing

Cleaning Code

<p>Standard Care Label W-S. Clean with water based cleaning agents, foam or pure, water free solvents. Vacuuming or light brushing is recommended to prevent dust and soil buildup. May also be disinfected with hydrogen peroxide, alcohol, and quaternary ammonium (quat) based cleaners.</p>

Performance



Breaking Strength (ASTM D5034)

295 lbf min. warp and 280 lbf min. fill

Tear (ASTM D2261)

85 lbf min. warp and 75 lbf min. fill

Seam Slippage (ASTM D4034)

85 lbf warp & 75 lbf fill

Pilling resistance (ASTM D3511)

Class 4 min.

Colorfastness to light (AATCC 16.3 Option 3)

Grade 4 min. at 40 hours

Colorfastness to crocking (AATCC 8)

Grade 4 min. dry & Grade 3 min. wet

Wyzenbeek Abrasion resistance (ASTM D4157)

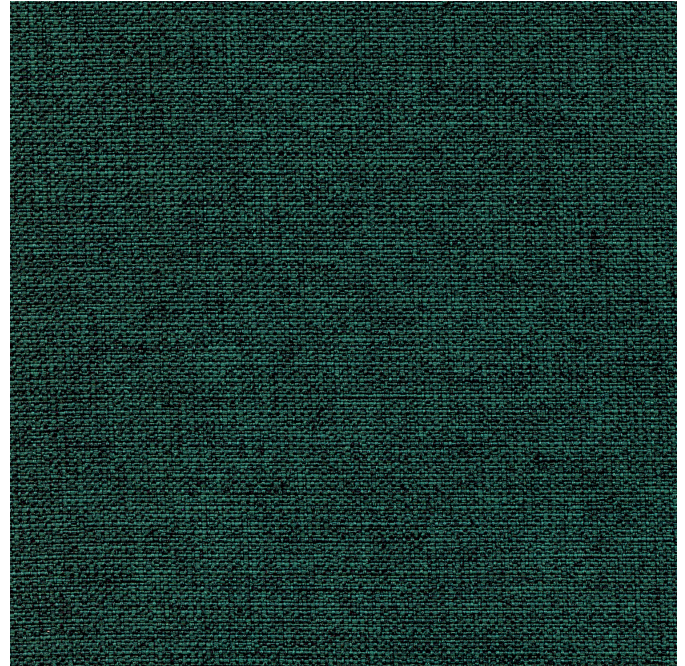
100,000 double rubs min. cotton duck

Flammability

CA Technical Bulletin 117-2013 Section 1
ASTM E84 Class I or A

Miscellaneous

Proudly woven in North America supporting our local communities.



Guilford of Maine

Acoustical Performance for Panel Applications
(ISO 10534-2)

