

Shift 2179

Pebbles 944

Specifications

Contents

100% post-consumer recycled biodegradable* polyester

Weight

12.3 ± 1.0 oz./lin. yd

Width

54" min. useable

Repeat

None

Treatment

None

Backing

Biodegradable* acrylic backcoating

Treatment

None

Backing

Biodegradable* acrylic backcoating

Cleaning Code

<p>Standard Care Label W-S. Clean with water based cleaning agents, foam or pure, water free solvents. Vacuuming or light brushing is recommended to prevent dust and soil buildup. May also be disinfected with hydrogen peroxide, alcohol, and quaternary ammonium (quat) based cleaners. Cleaning & Disinfection Handbook</p>

Performance



Breaking Strength (ASTM D5034)

245 lbf min. warp and 294 lbf min. fill

Tear (ASTM D2261)

min. warp and fill

Seam Slippage (ASTM D4034)

100 lbf min. warp and 108 lbf min. fill

Pilling resistance (ASTM D3511)

Class 4 min.

Colorfastness to light (AATCC 16.3 Option 3)

Grade 4.5 min. at 40 hours

Colorfastness to crocking (AATCC 8)

Grade 4 min. dry & Grade 4.5 min. wet

Wyzenbeek Abrasion resistance (ASTM D4157)

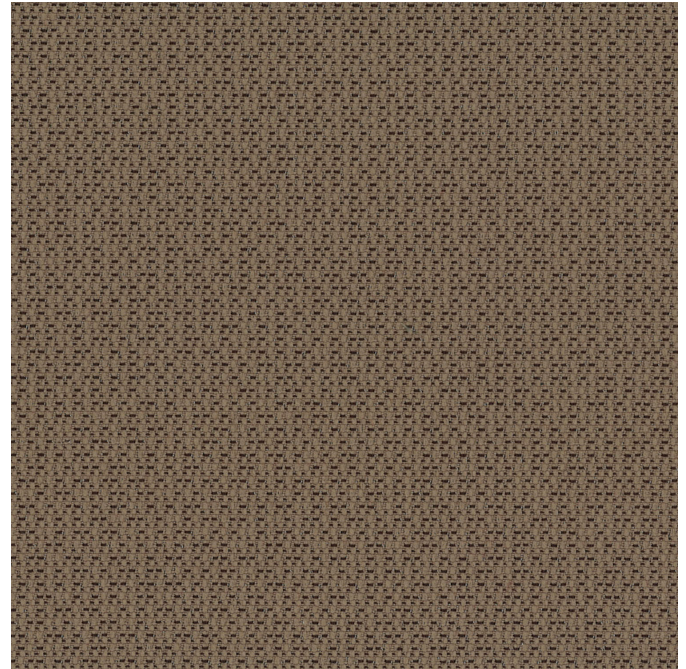
100,000 double rubs min. cotton duck

Flammability

CA Technical Bulletin 117-2013 Section 1

Miscellaneous

Proudly woven in North America supporting our local communities.



This pattern is included in the underwriters laboratory panel fabric recognition program. Additional testing of this U.L. recognized fabric is not required on approved panels from participating manufacturers.

